



CMF 2020-1 PLC Monthly Investor Report

March 2020

Analyst

Peter Cross
peter.cross@usbank.com
44.207.330.2024

U.S. Bank Global Corporate Trust Limited Address

5th Floor
125 Old Broad Street
London, EC2N 1AR

Distribution Date

16-Mar-20

U.S. Bank Global Corporate Trust Limited Website

<https://pivot.usbank.com>

General Information		Content	
Interest Payment Date:	16-Apr-20	Deal Summary	2
Prior Interest Payment Date:	n.a.	Deal Performance Summary - Last 4 IPD	3
Next Interest Payment Date:	18-May-20	Collateral Performance Graphs	4
Distribution Count:	1	Delinquencies Graphs	5
Closing Date:	26-Feb-20	Deal Counterparties	6
Final Maturity Date:	16-Jan-57	Note Distribution Detail	7
Interest Determination Date:	6-Apr-20	Note Interest Reconciliation - Accrual	8
Next Interest Determination Date:	11-May-20	Note Interest Reconciliation - Deferred	9
Index:	Compounded Daily SONIA	Note Principal Reconciliation	10
Currency:	GBP (£)	Residual Certificates	11
		Ratings Information	12
		Cash Reconciliation	13
		Other Required Information	14
		Mortgage Principal Analysis	15
		Principal Deficiency Ledger	16
		Reserve Fund Ledger	17
		Reserve Funds and Principal Allocation	18
		Swap Transaction Details	19
		Triggers	20-21
		Portfolio Performance	22-23
		Collateral Report	24-25
		Prepayment Rate (CPR)	26
		Pre-Enforcement Revenue Priority of Payments	27-29
		Pre-Enforcement Redemption Priority of Payments	30
		Swap Collateral Account Priority of Payments	31-32
		Post-Enforcement Priority of Payments	33-35
		Portfolio Analysis	36-42

CMF 2020-1 PLC

Monthly Investor Report

March 2020

Deal Summary

Notes	Original Principal Balance	Credit Enhancement on Closing	Fitch/Moody's Initial Ratings		Outstanding Principal Balance	Pool Factor	Current Credit Enhancement	Fitch/Moody's Current Ratings		Fitch/Moody's Watch
Class A Notes	301,722,000.00	10.00%	AAA	Aaa	301,722,000.00	1.000000	10.00%	AAA	Aaa	
Class B Notes	9,893,000.00	7.00%	AA+	Aa2	9,893,000.00	1.000000	7.00%	AA+	Aa2	
Class C Notes	8,244,000.00	4.50%	A+	Aa3	8,244,000.00	1.000000	4.50%	A+	Aa3	
Class D Notes	8,244,000.00	2.00%	BBB+	Baa1	8,244,000.00	1.000000	2.00%	BBB+	Baa1	
Class E Notes	1,649,000.00	1.50%	BBB-	Ba1	1,649,000.00	1.000000	1.50%	BBB-	Ba1	
Class X Notes	6,595,000.00	0.00%	BB+	Baa2	6,595,000.00	1.000000	0.00%	BB+	Baa2	
Total	336,347,000.00				336,347,000.00					

CMF 2020-1 PLC

Monthly Investor Report

March 2020

Deal Performance Summary - Last 4 IPD

	Cut off	IPD 1	IPD 2	IPD 3	IPD 4
Delinquencies					
1-2 Months in Arrears					
2-3 Months in Arrears					
3-4 Months in Arrears					
4+ Months in Arrears					
Excess Spread					
Amount during Period					
Percentage of Pool (Annualised)					
Constant Prepayment Rate (CPR)					
Period					
Since Cut off					
Principal Payment Rate (PPR)					
Total Principal Payments in Period					
Principal Cut off Balance	329,751,026.57				
Percentage of Cut off Balance (%)					
Payment Rate					
Percentage of Interest Due (%)					
Cumulative Losses					
Percentage of Initial Principal Balance (%)					

CMF 2020-1 PLC
Monthly Investor Report

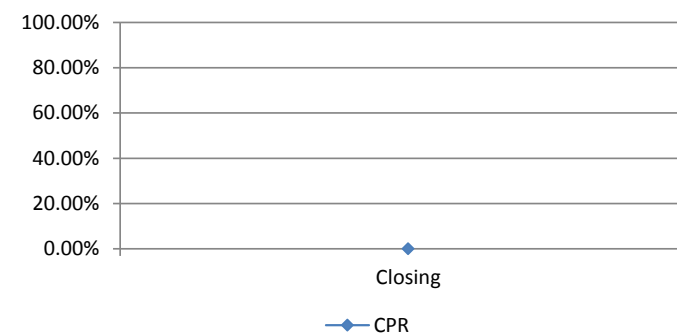
March 2020

Collateral Performance Graphs

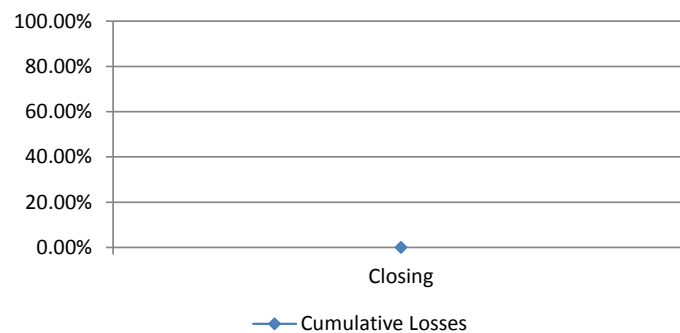
Mortgage Margin & Excess Spread



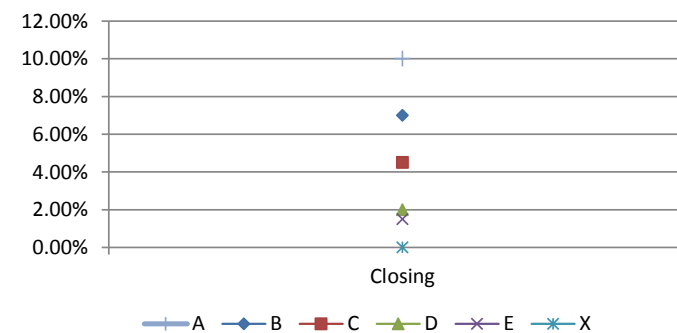
CPR (since issue)



Cumulative Losses



Credit Enhancement

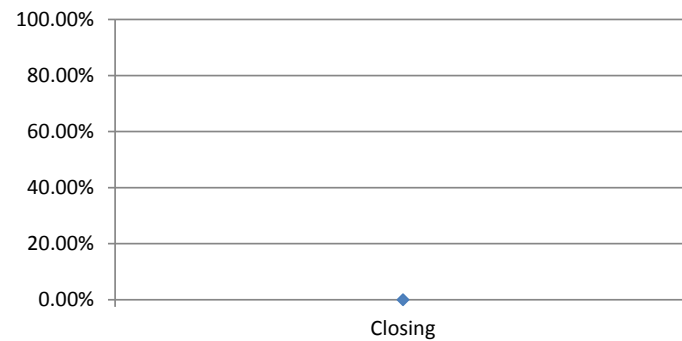


CMF 2020-1 PLC
Monthly Investor Report

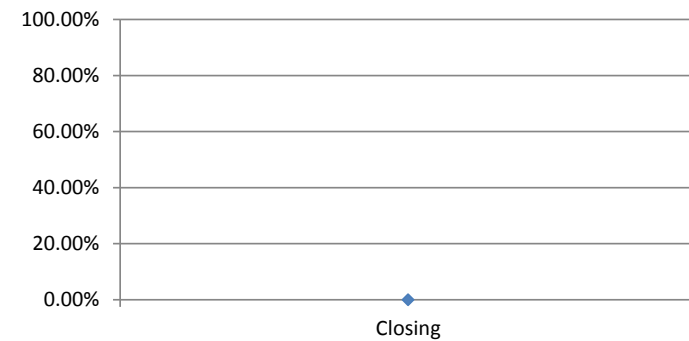
March 2020

Delinquencies Graphs

Delinquencies (1-2 Months in Arrears)



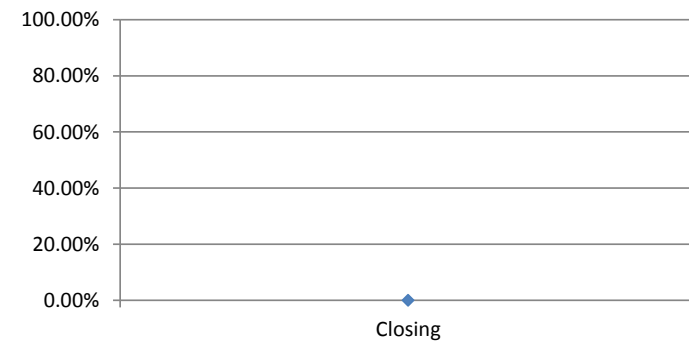
Delinquencies (2-3 Months in Arrears)



Delinquencies (3-4 Months in Arrears)



Delinquencies (4+ Months in Arrears)



CMF 2020-1 PLC

Monthly Investor Report

March 2020

Deal Counterparties								
Role	Counterparty	Moody's			Fitch			comments
		Long-Term	Short-Term	Rating Trigger	Long-Term	Short-Term	Rating Trigger	
Issuer	CMF 2020-1 PLC							
Holdings	CMF Holdings 2020-1 Limited							
Legal Title Holder	Charter Court Financial Services Limited							
Servicer	Charter Mortgages Limited							
Seller	Broadlands Finance Limited							
Cash Manager	U.S. Bank Global Corporate Trust Limited							
Swap Provider	Lloyds Bank Corporate Markets plc	A1	P-1	A3	A1	F1	A/F1	
Issuer Account Bank	Elavon Financial Services DAC, UK Branch	A1	P-1	A3	AA-	F1+	A/F1	
Collection Account Bank	Barclays Bank PLC	A1	P-1	Baa3	A+	F1	BBB+/F2	
Original Seller	Charter Court Financial Services Limited							
Security Trustee	U.S. Bank Trustees Limited							
Note Trustee	U.S. Bank Trustees Limited							
Principal Paying Agent	Elavon Financial Services DAC, UK Branch							
Agent Bank	Elavon Financial Services DAC, UK Branch							
Registrar	Elavon Financial Services DAC							
Corporate Services Provider	CSC Capital Markets UK Limited							
Back-up Servicer Facilitator	CSC Capital Markets UK Limited							
Share Trustee	CSC Corporate Services (UK) Limited							
Arranger	Lloyds Bank Corporate Markets plc							
Joint Lead Manager	Merril Lynch International							
	Lloyds Bank Corporate Markets plc							

The Originator has undertaken to the Issuer and the Security Trustee that it will retain a material net economic interest of not less than 5 per cent. in the securitisation in accordance with the text of each of Article 405 of Regulation (EU) No 575/2013 (the Capital Requirements Regulation or CRR) and Article 51 of Regulation (EU) No 231/2013, referred to as the Alternative Investment Fund Manager Regulation (the AIFM Regulation) (which, in each case, does not take into account any corresponding national measures) (the Retention). Such interest was, as at the Closing Date, and is as at the Report Date, comprising retention of randomly selected exposures equivalent to no less than 5% of the nominal value of the securitised exposures, where such exposures would otherwise have been securitised in the transaction affected by the Issuer, as required by the text of each of paragraph (c) of Article 405(1) of the CRR, paragraph (c) of Article 51(1) of the AIFM Regulation and paragraph (c) of Article 254(2) of the Solvency II Regulation.

CMF 2020-1 PLC

Monthly Investor Report

March 2020

Note Distribution Detail

Notes	ISIN / Common Code	Original Principal Balance	No. Of Notes	Beginning Principal Balance	Total Principal Distribution	Ending Principal Balance	Total Interest Distribution	Note Placement
Class A Notes	XS2096745216 / 209674521	301,722,000.00	3,017	301,722,000.00	n.a.	301,722,000.00	n.a.	Public
Class B Notes	XS2096745307 / 209674530	9,893,000.00	99	9,893,000.00	n.a.	9,893,000.00	n.a.	Public
Class C Notes	XS2096745729 / 209674572	8,244,000.00	82	8,244,000.00	n.a.	8,244,000.00	n.a.	Public
Class D Notes	XS2096745992 / 209674599	8,244,000.00	82	8,244,000.00	n.a.	8,244,000.00	n.a.	Public
Class E Notes	XS2096749127 / 209674912	1,649,000.00	16	1,649,000.00	n.a.	1,649,000.00	n.a.	Public
Class X Notes	XS2096749390 / 209674939	6,595,000.00	66	6,595,000.00	n.a.	6,595,000.00	n.a.	Public
Total		336,347,000.00	3,363	336,347,000.00	n.a.	336,347,000.00	n.a.	

CMF 2020-1 PLC
Monthly Investor Report

March 2020

Note Interest Reconciliation - Accrual

Notes	ISIN / Common Code	Method	Days	Beginning Principal Balance	Rate of Interest	Total Interest Accrued	Other Interest	Total Interest Distribution
Class A Notes	XS2096745216 / 209674521	Actual/365 (Fixed)	50	301,722,000.00	0.60000%	n.a.	n.a.	n.a.
Class B Notes	XS2096745307 / 209674530	Actual/365 (Fixed)	50	9,893,000.00	1.00000%	n.a.	n.a.	n.a.
Class C Notes	XS2096745729 / 209674572	Actual/365 (Fixed)	50	8,244,000.00	1.25000%	n.a.	n.a.	n.a.
Class D Notes	XS2096745992 / 209674599	Actual/365 (Fixed)	50	8,244,000.00	1.60000%	n.a.	n.a.	n.a.
Class E Notes	XS2096749127 / 209674912	Actual/365 (Fixed)	50	1,649,000.00	2.44000%	n.a.	n.a.	n.a.
Class X Notes	XS2096749390 / 209674939	Actual/365 (Fixed)	50	6,595,000.00	2.24000%	n.a.	n.a.	n.a.
Total				336,347,000.00		n.a.	n.a.	n.a.

CMF 2020-1 PLC
Monthly Investor Report

March 2020

Note Interest Reconciliation - Deferred

Notes	ISIN / Common Code	Beginning Deferred Interest	Interest Accrued on Deferred Interest	Current Period Deferred Interest	Deferred Interest Payments	Ending Deferred Interest
Class A Notes	XS2096745216 / 209674521	n.a.	n.a.	n.a.	n.a.	n.a.
Class B Notes	XS2096745307 / 209674530	n.a.	n.a.	n.a.	n.a.	n.a.
Class C Notes	XS2096745729 / 209674572	n.a.	n.a.	n.a.	n.a.	n.a.
Class D Notes	XS2096745992 / 209674599	n.a.	n.a.	n.a.	n.a.	n.a.
Class E Notes	XS2096749127 / 209674912	n.a.	n.a.	n.a.	n.a.	n.a.
Class X Notes	XS2096749390 / 209674939	n.a.	n.a.	n.a.	n.a.	n.a.
Total		n.a.	n.a.	n.a.	n.a.	n.a.

CMF 2020-1 PLC
Monthly Investor Report

March 2020

Note Principal Reconciliation					
Notes	Beginning Principal Balance	Total Principal Distribution	Ending Principal Balance	--- Credit Support ---	
				Original (1)	Current (2)
Class A Notes	301,722,000.00	n.a.	301,722,000.00	10.00%	10.00%
Class B Notes	9,893,000.00	n.a.	9,893,000.00	7.00%	7.00%
Class C Notes	8,244,000.00	n.a.	8,244,000.00	4.50%	4.50%
Class D Notes	8,244,000.00	n.a.	8,244,000.00	2.00%	2.00%
Class E Notes	1,649,000.00	n.a.	1,649,000.00	1.50%	1.50%
Class X Notes	6,595,000.00	n.a.	6,595,000.00	0.00%	0.00%
Total	336,347,000.00	n.a.	336,347,000.00		

(1) Determined as follows: Original Principal Balance of all subordinate classes plus Class A and B Liquidity Reserve Fund and General Reserve Fund/Total Original Principal Balance

(2) Determined as follows: Ending Principal Balance of all subordinate classes plus Class A and B Liquidity Reserve Fund and General Reserve Fund/Total Ending Principal Balance

CMF 2020-1 PLC
Monthly Investor Report

March 2020

Residual Certificates

Notes	ISIN / Common Code	Total Amount Distribution
RC1 Residual Certificates	XS2097438688 / 209743868	n.a.
RC2 Residual Certificates	XS2097439066 / 209743906	n.a.
Total		n.a.

CMF 2020-1 PLC

Monthly Investor Report

March 2020

Ratings Information

Notes	ISIN / Common Code	--- Original Ratings ---		--- Ratings Change / Change Date ¹ ---	
		Fitch	Moody's	Fitch	Moody's
Class A Notes	XS2096745216 / 209674521	AAA	Aaa		
Class B Notes	XS2096745307 / 209674530	AA+	Aa2		
Class C Notes	XS2096745729 / 209674572	A+	Aa3		
Class D Notes	XS2096745992 / 209674599	BBB+	Baa1		
Class E Notes	XS2096749127 / 209674912	BBB-	Ba1		
Class X Notes	XS2096749390 / 209674939	BB+	Baa2		

¹ Changed ratings provided on this report are based on information provided by the applicable rating agency via electronic transmission. It shall be understood that this transmission will generally have been provided to U.S. Bank Trustees Limited within 30 days of the payment date listed on this statement. Because ratings may have changed during the 30 day window, or may not be being provided by the rating agency in an electronic format and therefore not being updated on this report, U.S. Bank Trustees Limited recommends that investors obtain current rating information directly from the rating agency.

CMF 2020-1 PLC

Monthly Investor Report

March 2020

Cash Reconciliation

Available Collections		Distributions	
Available Revenue Receipts		Amounts Distributed by the Issuer	
(a) Revenue Receipts	n.a.	(see Other Required Information page for further detail)	
(b) Interest accrued on the Issuer Accounts	n.a.	Amounts Distributed by the Issuer	n.a.
(c) Amounts received under the Swap Agreement	n.a.		
(d) Class A and Class B Liquidity Reserve Fund Excess Amount	n.a.	Distributions to Noteholders	
(e) Class A and B Liquidity Reserve Fund Ledger ¹	n.a.	Interest Distribution	n.a.
(f) General Reserve Fund Excess Amount	n.a.	Principal Distribution	n.a.
(g) Reconciliation Amounts deemed to be Available Revenue Receipts	n.a.	Distributions to Noteholders	n.a.
(h) Item (v) of the Pre-Enforcement Revenue Priority of Payments	n.a.		
(i) Optional Purchase Price	n.a.		
(j) Other net income excluding Redemption Receipts	n.a.	Other Distributions	
(k) Amounts in accordance with item (g) of the Redemption PoP	n.a.	Issuer Profit Amount	n.a.
less:		Credit to Class A and Class B Liquidity Reserve Fund Ledger	n.a.
(l) Third Party Amounts	n.a.	Credit to the PDL	n.a.
(m) Tax payments not funded from Issuer Profit Ledger	n.a.	Credit to General Reserve Fund Ledger	n.a.
(n) Overdraft remedy amounts of DD/Non-DD Collection Accounts	n.a.	Surplus to credit to the Deposit Account	n.a.
Available Revenue Receipts	n.a.	Residual Certificates	n.a.
		Surplus applied as Available Revenue Funds	n.a.
Available Redemption Receipts		Other Distributions	n.a.
(a) Redemption Receipts	n.a.		
(b) Principal Deficiency Ledger	n.a.		
(c) Enhanced Amortisation Amount	n.a.		
(d) General Reserve Fund remaining ²	n.a.		
(e) Reconciliation Amounts to be Available Redemption Receipts	n.a.		
(f) Amount paid into Deposit Account	n.a.		
Available Redemption Receipts	n.a.		
Class A and Class B Liquidity Reserve Fund Release Amount	n.a.		
General Reserve Fund Liquidity Release Amount	n.a.		
Principal Addition Amount	n.a.		
Total Available Collections	n.a.	Total Distributions	n.a.

¹ On the Class B Redemption Date only

² On the Final Redemption Date only

CMF 2020-1 PLC
Monthly Investor Report

March 2020

Other Required Information

Amounts Distributed by the Issuer

Note Trustee	n.a.
Security Trustee	n.a.
Agent Bank, Registrar and Paying Agent	n.a.
Cash Manager	n.a.
Servicer	n.a.
Back-up Servicer Facilitator	n.a.
Corporate Servicer Provider	n.a.
Issuer Account Bank	n.a.
Collection Account Bank	n.a.
Securitisation Repository	n.a.
Third parties	n.a.
Transfer Costs	n.a.
Swap Provider	n.a.
Hedge Subordinated Amounts	n.a.
Amounts Distributed by the Issuer	n.a.

Revenue Receipts

Total interest receipts	0.00
Total fees	0.00
Total expenses	0.00
Total ERC	0.00
Total Revenue Recoveries	0.00
	0.00

CMF 2020-1 PLC
Monthly Investor Report

March 2020

Mortgage Principal Analysis

	Current Period	Since Issue
Opening mortgage principal balance - close		329,751,026.57
Opening mortgage principal balance - current	329,751,026.57	
Total opening mortgage principal balance	<u>329,751,026.57</u>	<u>329,751,026.57</u>
Unscheduled payments (Redemptions)	0.00	0.00
Scheduled payments	0.00	0.00
Principal Losses	0.00	0.00
Principal Recoveries	0.00	0.00
Closing mortgage principal balance	<u>329,751,026.57</u>	<u>329,751,026.57</u>

CMF 2020-1 PLC
Monthly Investor Report

March 2020

Principal Deficiency Ledger

Current Period Principal Deficiency

	Beginning PDL Balance	Deficiency Allocation	PDL Repayment	Ending PDL Balance
Class E Notes PDL	0.00	0.00	0.00	0.00
Class D Notes PDL	0.00	0.00	0.00	0.00
Class C Notes PDL	0.00	0.00	0.00	0.00
Class B Notes PDL	0.00	0.00	0.00	0.00
Class A Notes PDL	0.00	0.00	0.00	0.00
Total	0.00	0.00	0.00	0.00

CMF 2020-1 PLC
Monthly Investor Report

March 2020

Reserve Fund Ledger			
---------------------	--	--	--

		Credits	Debits
<u>Class A and Class B Liquidity Reserve Fund</u>			
Original Class A and Class B Liquidity Reserve Fund Amount	4,674,225.00		
Class A and Class B Liquidity Reserve Fund Amount as at Close / Previous IPD	4,674,225.00		
Class A and Class B Liquidity Reserve Fund Required Amount per Current IPD	4,674,225.00		
Top ups on IPD		0.00	
Drawings			0.00
Closing Balance	4,674,225.00		
 <u>General Reserve Fund</u>			
Original General Reserve Fund Amount	272,055.00		
General Reserve Fund Amount as at Close / Previous IPD	272,055.00		
General Reserve Fund Required Amount per Current IPD	272,055.00		
Top ups on IPD		0.00	
Drawings			0.00
Closing Balance	272,055.00		

CMF 2020-1 PLC

Monthly Investor Report

March 2020

Reserve Funds and Principal Allocation

General Reserve Fund

(a) on any Interest Payment Date up to and including the Final Redemption Date
(i) if a Reserve Fund Amortising Trigger Event has not occurred prior to the Calculation Date immediately preceding such Interest Payment Date, an amount equal to 1.5 per cent. of the aggregate current Principal Amount Outstanding of the Collateralised Notes prior to the application of Available Redemption Receipts on such Interest Payment Date, minus the Class A and Class B Liquidity Reserve Fund Required Amount; and

272,055.00

(ii) if a Reserve Fund Amortising Trigger Event has occurred prior to the Calculation Date immediately preceding such Interest Payment Date, an amount equal to 1.5 per cent. of the aggregate current Principal Amount Outstanding of the Collateralised Notes on the Interest Payment Date immediately preceding the date on which the Reserve Fund Amortising Trigger Event occurred (following the application of Available Redemption Receipts on such Interest Payment Date), minus the Class A and Class B Liquidity Reserve Fund Required Amount; and

0.00

(b) on each Interest Payment Date on and following the Final Redemption Date, zero;

0.00

Class A and Class B Liquidity Reserve Fund Required Amount

(a) on any Interest Payment Date falling prior to the Class B Redemption Date:

(i) if a Reserve Fund Amortising Trigger Event has not occurred prior to the Calculation Date immediately preceding such Interest Payment Date, an amount equal to 1.5 per cent. of the aggregate current Principal Amount Outstanding of the Class A and Class B Notes prior to the application of Available Redemption Receipts on such Interest Payment Date; and

4,674,225.00

(ii) if a Reserve Fund Amortising Trigger Event has occurred prior to the Calculation Date immediately preceding such Interest Payment Date, an amount equal to 1.5 per cent. of the aggregate current Principal Amount Outstanding of the Class A and Class B Notes on the Interest Payment Date immediately preceding the date on which the Reserve Fund Amortising Trigger Event occurred (following to the application of Available Redemption Receipts on such Interest Payment Date); and

0.00

(iii) on any Interest Payment Date falling on or after the Class B Redemption Date, zero;

0.00

Principal Addition Amount

Available Revenue Receipts & Liquidity Release Amount

n.a.

Amounts due on the Revenue Waterfall from item [(a)] to [(f)] and [(h)]

n.a.

Senior Expenses Deficit

n.a.

Principal Addition Amount

n.a.

CMF 2020-1 PLC
Monthly Investor Report

March 2020

Swap Transaction Details

Fixed Rate Issuer to Swap Counterparty

Period Start Date (included)	26-Feb-20
Period End date (excluded)	16-Apr-20
Day Count Fraction	0.137
Fixed Rate	0.85000%
Swap Notional Amount	322,998,924.58
Total Swap Payment by Issuer to Swap Counterparty	0.00

Floating Rate Swap Counterparty to Issuer

Period Start Date (included)	26-Feb-20
Period End date (excluded)	16-Apr-20
Day Count Fraction	0.137
Floating Rate	0.00000%
Swap Notional Amount	322,998,924.58
Total Swap Payment by Swap Counterparty to Issuer	0.00

Net Payment Due (Issuer/Swap Counterparty) **0.00**

CMF 2020-1 PLC

Monthly Investor Report

March 2020

Triggers

<u>Event of Default</u>	<u>Breach (Y/N)</u>
(a) subject to Condition 18 (Subordination by Deferral), if default is made in the payment of any principal or interest due in respect of the Notes and the default continues for: (i) a period of five Business Days in the case of principal, or (ii) three Business Days in the case of interest; or	No
(b) if the Issuer fails to perform or observe any of its other obligations under these Conditions or any Transaction Document to which it is a party and the failure continues for a period of 15 days (or such longer period as the Note Trustee may permit) (except that in any case where the Note Trustee considers the failure to be incapable of remedy, then no continuation or notice as is aforementioned will be required) following the service by the Note Trustee on the Issuer of notice requiring the same to be remedied; or	No
(c) if any representation or warranty made by the Issuer under any Transaction Document is incorrect when made and the matters giving rise to such misrepresentation are not remedied within a period of 15 days (or such longer period as the Note Trustee may permit) (except that in any case where the Note Trustee considers the matters giving rise to such misrepresentation to be incapable of remedy, then no continuation or notice as is hereinafter mentioned will be required) following the service by the Note Trustee on the Issuer of notice requiring the same to be remedied; or	No
(d) if any order is made by any competent court or any resolution is passed for the winding up or dissolution of the Issuer, save for the purposes of reorganisation on terms approved in writing by the Note Trustee or by Extraordinary Resolution of the Noteholders; or	No
(e) if (i) the Issuer ceases or threatens to cease to carry on the whole or a substantial part of its business, save for the purposes of reorganisation on terms approved in writing by the Note Trustee or by Extraordinary Resolution of the Noteholders, or (ii) the Issuer stops or threatens to stop payment of, or is unable to, or admits inability to, pay its debts (or any class of its debts) as they fall due or the value of its assets falls to less than the amount of its liabilities (taking into account its contingent and prospective liabilities) or (iii) the Issuer is deemed unable to pay its debts pursuant to or for the purposes of any applicable law or is adjudicated or found bankrupt or insolvent; or	No
(f) if proceedings are initiated against the Issuer under any applicable liquidation, insolvency, composition, reorganisation or other similar laws or an application is made (or documents filed with the court) for the appointment of an administrative or other receiver, manager, administrator or other similar official, or an administrative or other receiver, manager, administrator or other similar official is appointed, in relation to the Issuer or, as the case may be, in relation to the whole or any part of the undertaking or assets of the Issuer, and in any such case (other than the appointment of an administrator or an administrative receiver appointed following presentation of a petition for an administration order), unless initiated by the Issuer, is not discharged within 30 days; or	No
(g) if the Issuer (or its directors or shareholders) initiates or consents to judicial proceedings relating to itself under any applicable liquidation, insolvency, composition, reorganisation or other similar laws or makes a conveyance or assignment for the benefit of, or enters into any composition or other arrangement with, its creditors generally (or any class of its creditors) or takes steps with a view to obtaining a moratorium in respect of any of its indebtedness or any meeting is convened to consider a proposal for an arrangement or composition with its creditors generally (or any class of its creditors).	No

CMF 2020-1 PLC
Monthly Investor Report

March 2020

Triggers

Mandatory Redemption of the Notes

8.3 (a) Optional Purchase Price received			No
8.3 (b) Ten Per cent clean up call			No
	Current	Trigger	
	328,845,147.19	32,975,200.00	
8.4 Taxation or Other Reasons			No

CMF 2020-1 PLC
Monthly Investor Report

March 2020

Portfolio Performance								
As at: 29/02/2020								
	This Period				Last Period			
	No.	Balance	Arrears	%	No.	Balance	Arrears	%
Total								
No. of Loans Paying => Monthly CMS	1,952	327,345,978.43	0.00	99.54%	n.a.	n.a.	n.a.	n.a.
No. of Loans Paying => 75% Monthly CMS	0	0.00	0.00	0.00%	n.a.	n.a.	n.a.	n.a.
No. of Loans Paying < 75% Monthly CMS	7	1,143,537.41	1,325.13	0.35%	n.a.	n.a.	n.a.	n.a.
No. of Loans That Made No Payment	2	355,631.35	1,473.56	0.11%	n.a.	n.a.	n.a.	n.a.
Total	1,961	328,845,147.19	2,798.69	100.00%	n.a.	n.a.	n.a.	n.a.
% Original Principal Balance				99.27%				n.a.
% Outstanding Principal Balance				99.54%				n.a.
1 to 2 Months								
No. of Loans Paying => Monthly CMS	0	0.00	0.00	0.00%	n.a.	n.a.	n.a.	n.a.
No. of Loans Paying => 75% Monthly CMS	0	0.00	0.00	0.00%	n.a.	n.a.	n.a.	n.a.
No. of Loans Paying < 75% Monthly CMS	0	0.00	0.00	0.00%	n.a.	n.a.	n.a.	n.a.
No. of Loans That Made No Payment	1	176,985.59	903.15	0.05%	n.a.	n.a.	n.a.	n.a.
Total	1	176,985.59	903.15	0.05%	n.a.	n.a.	n.a.	n.a.
% Original Principal Balance				0.05%				n.a.
% Outstanding Principal Balance				0.05%				n.a.
2 to 3 Months								
No. of Loans Paying => Monthly CMS	0	0.00	0.00	0.00%	n.a.	n.a.	n.a.	n.a.
No. of Loans Paying => 75% Monthly CMS	0	0.00	0.00	0.00%	n.a.	n.a.	n.a.	n.a.
No. of Loans Paying < 75% Monthly CMS	0	0.00	0.00	0.00%	n.a.	n.a.	n.a.	n.a.
No. of Loans That Made No Payment	0	0.00	0.00	0.00%	n.a.	n.a.	n.a.	n.a.
Total	0	0.00	0.00	0.00%	n.a.	n.a.	n.a.	n.a.
% Original Principal Balance				0.00%				n.a.
% Outstanding Principal Balance				0.00%				n.a.

CMF 2020-1 PLC

Monthly Investor Report

March 2020

Portfolio Performance

As at: 29/02/2020

	This Period				Last Period			
	No.	Balance	Arrears	%	No.	Balance	Arrears	%
3 to 4 Months								
No. of Loans Paying => Monthly CMS	0	0.00	0.00	0.00%	n.a.	n.a.	n.a.	n.a.
No. of Loans Paying => 75% Monthly CMS	0	0.00	0.00	0.00%	n.a.	n.a.	n.a.	n.a.
No. of Loans Paying < 75% Monthly CMS	0	0.00	0.00	0.00%	n.a.	n.a.	n.a.	n.a.
No. of Loans That Made No Payment	0	0.00	0.00	0.00%	n.a.	n.a.	n.a.	n.a.
Total	0	0.00	0.00	0.00%	n.a.	n.a.	n.a.	n.a.
% Original Principal Balance				0.00%				n.a.
% Outstanding Principal Balance				0.00%				n.a.
4+ Months								
No. of Loans Paying => Monthly CMS	0	0.00	0.00	0.00%	n.a.	n.a.	n.a.	n.a.
No. of Loans Paying => 75% Monthly CMS	0	0.00	0.00	0.00%	n.a.	n.a.	n.a.	n.a.
No. of Loans Paying < 75% Monthly CMS	0	0.00	0.00	0.00%	n.a.	n.a.	n.a.	n.a.
No. of Loans That Made No Payment	0	0.00	0.00	0.00%	n.a.	n.a.	n.a.	n.a.
Total	0	0.00	0.00	0.00%	n.a.	n.a.	n.a.	n.a.
% Original Principal Balance				0.00%				n.a.
% Outstanding Principal Balance				0.00%				n.a.

NB: The Administrator does not report Days in Arrears but Month in Arrears as referred to by the deal documentation

CMF 2020-1 PLC

Monthly Investor Report

March 2020

Collateral Report

As at: 29/02/2020

	<u>This Period</u>	<u>Last Period</u>
Total Arrears Balance (1 month and over)	903.15	0.00
Total Arrears due	2,798.69	n.a.

	<u>At Close</u>	<u>This Period</u>	<u>Last Period</u>
Original Principal Balance as at close	329,751,026.57		
Total Original Number of Loans	1,963		
Outstanding Principal Balance as at prior month end		328,845,147.19	n.a.
Total Current Number of Loans		1,961	n.a.
Total number of performing loans		1,960	n.a.
Total value of performing loans		328,668,161.60	n.a.
Total number of 3+ months		0	n.a.
Total value of 3+ months		0.00	n.a.
Percentage 3+ months on Original Balance		0.00%	n.a.
Percentage 3+ months on Outstanding Balance		0.00%	n.a.
Total Value of Arrears Cases		176,985.59	n.a.
Total Number of Arrears Cases		1	n.a.
% Original Principal Balance		0.05%	n.a.
% Outstanding Principal Balance		0.05%	n.a.

CMF 2020-1 PLC
Monthly Investor Report

March 2020

Collateral Report

As at: 29/02/2020

	<u>This Period</u>	<u>Last Period</u>
REPOSSESSIONS		
Number of Repossessions this Period	0	n.a.
Repossessions Cured	0	n.a.
Total Number of Properties Unsold	0	n.a.
Principal Balance Unsold	0.00	n.a.
Principal Balance Cured	0.00	n.a.
% Original Principal Balance	0.00%	n.a.
%Outstanding Principal Balance	0.00%	n.a.

	<u>This Period</u>	<u>Last Period</u>
SALES OF REPOSSESSIONS		
	<u>Current Balance</u>	<u>Current Balance</u>
Total Number of Repossessions Sold since close	0	n.a.
Total Value of Property Sold	0.00	n.a.
Value of Properties Repossessed this period	0.00	n.a.
Cumulative Value of Properties Repossessed since close	0.00	n.a.
Number of Properties sold this period	0	n.a.
Value of Properties sold this period	0.00	n.a.
Cumulative Loss on Sale	0.00	n.a.
Cumulative Loss on Sale % of Original Principal Balance	0.00%	n.a.
Cumulative Redemption Shortfalls incurred	0.00	n.a.
Period Losses	0.00	n.a.
Cumulative Losses	0.00	n.a.
OTHER LOSSES		
Cumulative ERC losses incurred	0.00	0.00
Cumulative Fee losses incurred	0.00	0.00
Cumulative Expense losses incurred	0.00	0.00

CMF 2020-1 PLC

Monthly Investor Report

March 2020

Prepayment Rate (CPR)

	This Period	Last Period
Average Constant Prepayment Rate (CPR) Since Issue with Calculation		
<p>Average CPR speed is the amount expressed as an annualised percentage of principal prepaid in excess of scheduled repayments. The average CPR speed is calculated by first dividing the Current Residential Mortgage Loan Principal Balance (i.e. the actual balance) by the Scheduled Residential Mortgage Loan Principal Balance assuming no prepayments have been made (i.e. only scheduled repayments have been made). The quotient is then raised to a power whereby the exponent is the quantity twelve divided by the number of months since issue. Subtract this result from one then multiply it by one hundred (100) to determine the Average CPR speed.</p>	0.88%	n.a.
<p>The calculation is expressed as follows:</p> $CPR_{Avg} = 100 \times \left[1 - \left(\frac{\text{Current Residential Mortgage Loan Principal Balance}}{\text{Scheduled Residential Mortgage Loan Principal Balance}} \right)^{\frac{12}{\text{months since}}}} \right]$		
3 Month Periodical Constant Prepayment Rate (CPR) with Calculation (Annualised)		
<p>Annualised Periodical CPR speed is the amount expressed as a periodical percentage of principal prepaid in excess of scheduled repayments. The Periodical CPR speed is calculated by first dividing the Current Residential Mortgage Loan Principal Balance (i.e. the actual balance) by the Scheduled Residential Mortgage Loan Principal Balance in the period assuming no prepayments have been made (i.e. only scheduled repayments have been made). This quotient is then raised to a power whereby the exponent is the quantity twelve divided by the number of months in the period. Subtract this result from the one then multiply it by one hundred (100) to determined the Periodical CPR speed.</p>	n.a.	n.a.
<p>The calculation is expressed as follows:</p> $\text{Periodical CPR} = 100 \times \left[1 - \left(\frac{\text{Current Residential Mortgage Loan Principal Balance}}{\text{Scheduled Residential Mortgage Loan Principal Balance}} \right)^{\frac{12}{\text{months in period}}} \right]$		
12 Month Periodical Constant Prepayment Rate (CPR) with Calculation (Annualised)		
<p>Annualised Periodical CPR speed is the amount expressed as a periodical percentage of principal prepaid in excess of scheduled repayments. The Periodical CPR speed is calculated by first dividing the Current Residential Mortgage Loan Principal Balance (i.e. the actual balance) by the Scheduled Residential Mortgage Loan Principal Balance in the period assuming no prepayments have been made (i.e. only scheduled repayments have been made). This quotient is then raised to a power whereby the exponent is the quantity twelve divided by the number of months in the period. Subtract this result from the one then multiply it by one hundred (100) to determined the Periodical CPR speed.</p>	n.a.	n.a.
<p>The calculation is expressed as follows:</p> $\text{Periodical CPR} = 100 \times \left[1 - \left(\frac{\text{Current Residential Mortgage Loan Principal Balance}}{\text{Scheduled Residential Mortgage Loan Principal Balance}} \right)^{\frac{12}{\text{months in period}}} \right]$		

CMF 2020-1 PLC

Monthly Investor Report

March 2020

Pre-Enforcement Revenue Priority of Payments		
<u>Available Revenue Receipts</u>	This IPD	Last IPD
	0.00	n.a.
(a) first, in or towards satisfaction pro rata and pari passu according to the respective amounts thereof of:		
(i) any fees, costs, charges, Liabilities, expenses and all other amounts then due to the Note Trustee and any Appointee under the provisions of the Trust Deed and the other Transaction Documents together with (if payable) VAT thereon as provided therein; and	0.00	n.a.
(ii) any fees, costs, charges, Liabilities, expenses and all other amounts then due to the Security Trustee and any Appointee under the provisions of the Deed of Charge and the other Transaction Documents together with (if payable) VAT thereon as provided therein;	0.00	n.a.
(b) second, in or towards satisfaction pro rata and pari passu according to the respective amounts thereof (in each case without double counting) of:		
(i) any remuneration then due and payable to the Agent Bank, the Registrar and the Paying Agent and any fees, costs, charges, Liabilities and expenses then due to them under the provisions of the Agency Agreement, together with (if payable) VAT thereon as provided therein;	0.00	n.a.
(ii) any amounts then due and payable to the Cash Manager and any fees, costs, charges, Liabilities and expenses then due under the provisions of the Cash Management Agreement, together with VAT (if payable) thereon as provided therein;	0.00	n.a.
(iii) any amounts then due and payable to the Servicer and any fees (including the Base Fee), costs, charges, Liabilities and expenses then due under the provisions of the Servicing Agreement, inclusive of VAT (if payable) as provided therein;	0.00	n.a.
(iv) any amounts then due and payable to the Back-Up Servicer Facilitator and any fees, costs, charges, Liabilities and expenses then due under the provisions of the Servicing Agreement, together with (if payable) VAT thereon as provided therein;	0.00	n.a.
(v) any amounts then due and payable to the Corporate Services Provider and any fees, costs, charges, Liabilities and expenses then due under the provisions of the Corporate Services Agreement, together with (if payable) VAT thereon as provided therein;	0.00	n.a.
(vi) any amounts then due and payable to the Issuer Account Bank and any custodian and any fees, costs, charges, Liabilities and expenses then due under the provisions of the Bank Account Agreement and any Custody Agreement, together with (if applicable) VAT thereon as provided therein;	0.00	n.a.
(vii) any amounts then due and payable to the Collection Account Bank and any fees, costs, charges, Liabilities and expenses then due under the provisions of the Collection Account Agreement, together with (if applicable) VAT thereon as provided therein;	0.00	n.a.
(viii) if applicable, the fees, costs, liabilities and expenses of the securitisation repository or any other third party website provider;	0.00	n.a.

CMF 2020-1 PLC

Monthly Investor Report

March 2020

Pre-Enforcement Revenue Priority of Payments

(c)	third, in or towards satisfaction pro rata and pari passu according to the respective amounts thereof of:		
	(i) any amounts due and payable by the Issuer to third parties and incurred without breach by the Issuer of the Transaction Documents to which it is a party (and for which payment has not been provided for elsewhere) and any amounts required to pay or discharge any liability of the Issuer for corporation tax of the Issuer (but only to the extent not capable of being satisfied out of amounts retained by the Issuer under item (e) below); and	0.00	n.a.
	(ii) any Transfer Costs which the Servicer has failed to pay pursuant to Clause 18.3 of the Servicing Agreement;	0.00	n.a.
(d)	fourth, to provide for amounts due on the relevant Swap Payment Date, to pay, in or towards satisfaction of any amounts due to the Swap Provider in respect of the Swap Agreement (including any termination payment due and payable by the Issuer to the extent it is not satisfied by the payment by the Issuer to the Swap Provider of any Replacement Swap Premium or from the Swap Collateral Account Priority of Payments but excluding, if applicable, any related Hedge Subordinated Amounts);	0.00	n.a.
(e)	fifth, to pay the Issuer an amount equal to £100 to be retained by the Issuer as profit in respect of the business of the Issuer (the "Issuer Profit Amount");	0.00	n.a.
(f)	sixth, to provide for amounts due on the relevant Interest Payment Date, to pay, pro rata and pari passu, interest due and payable on the Class A Notes;	0.00	n.a.
(g)	seventh, (so long as the Class A Notes remain outstanding following such Interest Payment Date), to credit the Class A Principal Deficiency Sub-Ledger in an amount sufficient to eliminate any debit thereon (such amounts to be applied in repayment of principal as Available Redemption Receipts);	0.00	n.a.
(h)	eighth, to provide for amounts due on the relevant Interest Payment Date, to pay, pro rata and pari passu, interest due and payable on the Class B Notes;	0.00	n.a.
(i)	ninth, to credit the Class A and Class B Liquidity Reserve Fund Ledger up to the Class A and Class B Liquidity Reserve Fund Required Amount;	0.00	n.a.
(j)	tenth, (so long as the Class B Notes remain outstanding following such Interest Payment Date), to credit the Class B Principal Deficiency Sub-Ledger in an amount sufficient to eliminate any debit thereon (such amounts to be applied in repayment of principal as Available Redemption Receipts);	0.00	n.a.
(k)	eleventh, to provide for amounts due on the relevant Interest Payment Date, to pay, pro rata and pari passu, interest due and payable on the Class C Notes;	0.00	n.a.
(l)	twelfth, (so long as the Class C Notes remain outstanding following such Interest Payment Date), to credit the Class C Principal Deficiency Sub-Ledger in an amount sufficient to eliminate any debit thereon (such amounts to be applied in repayment of principal as Available Redemption Receipts);	0.00	n.a.
(m)	thirteenth, to provide for amounts due on the relevant Interest Payment Date, to pay, pro rata and pari passu, interest due and payable on the Class D Notes;	0.00	n.a.

CMF 2020-1 PLC

Monthly Investor Report

March 2020

Pre-Enforcement Revenue Priority of Payments		
(n) fourteenth, (so long as the Class D Notes remain outstanding following such Interest Payment Date), to credit the Class D Principal Deficiency Sub-Ledger in an amount sufficient to eliminate any debit thereon (such amounts to be applied in repayment of principal as Available Redemption Receipts);	0.00	n.a.
(o) fifteenth, to provide for amounts due on the relevant Interest Payment Date, to pay, pro rata and pari passu, interest due and payable on the Class E Notes;	0.00	n.a.
(p) sixteenth, (so long as the Class E Notes remain outstanding following such Interest Payment Date), to credit the Class E Principal Deficiency Sub-Ledger in an amount sufficient to eliminate any debit thereon (such amounts to be applied in repayment of principal as Available Redemption Receipts);	0.00	n.a.
(q) seventeenth, to credit the General Reserve Fund Ledger up to the General Reserve Fund Required Amount;	0.00	n.a.
(r) eighteenth, to provide for amounts due on the relevant Interest Payment Date, to pay in accordance with the terms of the Swap Agreement to the Swap Provider in respect of any Hedge Subordinated Amounts (to the extent not satisfied by payment to the Swap Provider by the Issuer of any applicable Replacement Swap Premium or from the Swap Collateral Account Priority of Payments);	0.00	n.a.
(s) nineteenth, on any Interest Payment Date occurring on or after the Optional Redemption Date or the Final Redemption Date an amount equal to the lesser of:		
(i) all remaining amounts (if any); and	0.00	n.a.
(ii) the amount required by the Issuer to pay in full all amounts payable under items (a) to (f) (inclusive) of the Pre-Enforcement Redemption Priority of Payments, less any Available Redemption Receipts (other than item (c) of the definition thereof) otherwise available to the Issuer, to be applied as Available Redemption Receipts;	0.00	n.a.
(t) twentieth, to provide for amounts due on the relevant Interest Payment Date, to pay, pro rata and pari passu, interest due and payable on the Class X Notes;	0.00	n.a.
(u) twenty-first, to provide for amounts due on the relevant Interest Payment Date, to pay, pro rata and pari-passu, principal due and payable on the Class X Notes until the Principal Amount Outstanding on the Class X Notes has been reduced to zero;	0.00	n.a.
(v) twenty-second, on any Interest Payment Date falling within a Determination Period, all remaining amounts to be credited to the Deposit Account to be applied on the next Interest Payment Date as Available Revenue Receipts; and	0.00	n.a.
(w) twenty-third, on any Interest Payment Date prior to (but excluding) the Optional Redemption Date any excess amounts pro rata and pari passu as RC1 Payments to the holders of the RC1 Residual Certificates and thereafter, any excess amounts pro rata and pari passu as RC2 Payments to the holders of the RC2 Residual Certificates.		
RC1 Payments	0.00	n.a.
RC2 Payments	0.00	n.a.
Total paid	0.00	n.a.

CMF 2020-1 PLC
Monthly Investor Report

March 2020

Pre-Enforcement Redemption Priority of Payments		
	This IPD	Last IPD
<u>Available Redemption Receipts</u>	0.00	n.a.
(a) first, any Principal Addition Amounts to be applied to meet any Senior Expenses Deficit;	0.00	n.a.
(b) second, in or towards repayment, pro rata and pari passu, of principal amounts outstanding on the Class A Notes until the Principal Amount Outstanding on the Class A Notes has been reduced to zero;	0.00	n.a.
(c) third, in or towards repayment, pro rata and pari passu, of principal amounts outstanding on the Class B Notes until the Principal Amount Outstanding on the Class B Notes has been reduced to zero;	0.00	n.a.
(d) fourth, in or towards repayment, pro rata and pari passu, of principal amounts outstanding on the Class C Notes until the Principal Amount Outstanding on the Class C Notes has been reduced to zero;	0.00	n.a.
(e) fifth, in or towards repayment, pro rata and pari passu, of principal amounts outstanding on the Class D Notes until the Principal Amount Outstanding on the Class D Notes has been reduced to zero;	0.00	n.a.
(f) sixth, in or towards repayment, pro rata and pari passu, of principal amounts outstanding on the Class E Notes until the Principal Amount Outstanding on the Class E Notes has been reduced to zero;	0.00	n.a.
(g) seventh, any excess amounts as Available Revenue Receipts.	0.00	n.a.
Total paid	0.00	n.a.

CMF 2020-1 PLC

Monthly Investor Report

March 2020

Swap Collateral Account Priority of Payments		
<u>Amounts and securities standing to the credit of each Swap Collateral Account</u>	This IPD	Last IPD
	0.00	n.a.
(a) to pay an amount equal to any Swap Tax Credits received by the Issuer to the relevant Swap Provider;	0.00	n.a.
(b) prior to the designation of an Early Termination Date (as defined in the Swap Agreement, the "Early Termination Date") in respect of the Swap Agreement, solely in or towards payment or discharge of any Return Amounts (as defined in the Swap Credit Support Annex), Interest Amounts and Distributions (as defined in the Swap Credit Support Annex), on any day, directly to the Swap Provider;	0.00	n.a.
(c) following the designation of an Early Termination Date in respect of the Swap Agreement where (A) such Early Termination Date has been designated following a Swap Provider Default or Swap Provider Downgrade Event and (B) the Issuer enters into a Replacement Swap Agreement in respect of the Swap Agreement on or around the Early Termination Date of the Swap Agreement, on the later of the day on which such Replacement Swap Agreement is entered into, the day on which a termination payment (if any) payable to the Issuer has been received and the day on which a Replacement Swap Premium (if any) payable to the Issuer has been received, in the following order of priority:		
(i) first, in or towards payment of a Replacement Swap Premium (if any) payable by the Issuer to a replacement swap provider in order to enter into a Replacement Swap Agreement with the Issuer with respect to the Swap Agreement being terminated;	0.00	n.a.
(ii) second, in or towards payment of any termination payment due to the outgoing Swap Provider; and	0.00	n.a.
(iii) third, the surplus (if any) on such day to be transferred to the Deposit Account to be applied as Available Revenue Receipts;	0.00	n.a.
(d) following the designation of an Early Termination Date in respect of the Swap Agreement where: (A) such Early Termination Date has been designated otherwise than as a result of one of the events specified at item (c)(A) above, and (B) the Issuer enters into a Replacement Swap Agreement in respect of the Swap Agreement on or around the Early Termination Date of the Swap Agreement, on the later of the day on which such Replacement Swap Agreement is entered into, the day on which a termination payment (if any) payable to the Issuer has been received and the day on which a Replacement Swap Premium (if any) payable to the Issuer has been received, in the following order of priority:		
(i) first, in or towards payment of any termination payment due to the outgoing Swap Provider;	0.00	n.a.
(ii) second, in or towards payment of a Replacement Swap Premium (if any) payable by the Issuer to a replacement swap provider in order to enter into a Replacement Swap Agreement with the Issuer with respect to the Swap Agreement being terminated; and	0.00	n.a.
(iii) third, any surplus on such day to be transferred to the Deposit Account to be applied as Available Revenue Receipts;	0.00	n.a.
(e) following the designation of an Early Termination Date in respect of the Swap Agreement for any reason where the Issuer does not enter into a Replacement Swap Agreement in respect of the Swap Agreement on or around the Early Termination Date of the Swap Agreement and, on the date on which the relevant payment is due, in or towards payment of any termination payment due to the outgoing Swap Provider; and	0.00	n.a.

CMF 2020-1 PLC

Monthly Investor Report

March 2020

Swap Collateral Account Priority of Payments

- (f) following payments of amounts due pursuant to item (e) above, if amounts remain standing to the credit of a Swap Collateral Account, such amounts may be applied only in accordance with the following provisions:
- (i) first, in or towards payment of a Replacement Swap Premium (if any) payable by the Issuer to a replacement swap provider in order to enter into a Replacement Swap Agreement with the Issuer with respect to the Swap Agreement; and
 - (ii) second, any surplus remaining after payment of such Replacement Swap Premium to be transferred to the Deposit Account to be applied as Available Revenue Receipts, provided that for so long as the Issuer does not enter into a Replacement Swap Agreement with respect to the Swap Agreement, on each Swap Payment Date, the Issuer (or the Cash Manager on its behalf) will be permitted to withdraw an amount from the Swap Collateral Account (which shall be debited to the Swap Collateral Ledger), equal to the excess of the Swap Provider Swap Amount over the Issuer Swap Amount which would have been paid by the Swap Provider to the Issuer on such Swap Payment Date but for the designation of an Early Termination Date under the Swap Agreement, such surplus to be transferred to the Deposit Account to be applied as Available Revenue Receipts; and provided further that for so long as the Issuer does not enter into a Replacement Swap Agreement with respect to the Swap Agreement on or prior to the earlier of: (A) the Calculation Date immediately before the Interest Payment Date on which the Principal Amount Outstanding of all Collateralised Notes would be reduced to zero (taking into account any Swap Collateral Account Surplus to be applied as Available Revenue Receipts on such Interest Payment Date); or (B) the day on which an Enforcement Notice is given pursuant to Condition 11 (Events of Default); or (C) the date on which the Current Balance of the Fixed Rate Loans (excluding any Enforced Loans) is reduced to zero, then the amount standing to the credit of such Swap Collateral Account on such day shall be transferred to the Deposit Account to be applied as Available Revenue Receipts as soon as reasonably practicable thereafter.

Total paid	0.00	n.a.
------------	------	------

CMF 2020-1 PLC

Monthly Investor Report

March 2020

Post-Enforcement Priority of Payments		
Available Funds	This IPD 0.00	Last IPD n.a.
(a) first, in or towards satisfaction, pro rata and pari passu, according to the respective amounts thereof of:		
(i) any fees, costs, charges, Liabilities, expenses and all other amounts then due and payable to the Note Trustee, Receiver and any Appointee under the provisions of the Trust Deed and the other Transaction Documents, together with (if payable) VAT thereon as provided therein; and	0.00	n.a.
(ii) any fees, costs, charges, Liabilities, expenses and all other amounts then due and payable to the Security Trustee, Receiver and any Appointee under the provisions of the Deed of Charge and the other Transaction Documents, together with (if payable) VAT thereon as provided therein;	0.00	n.a.
(b) second, in or towards satisfaction, pro rata and pari passu, according to the respective amounts thereof of:		
(i) any remuneration then due and payable to the Agent Bank, the Registrar and the Paying Agent and any costs, charges, Liabilities and expenses then due and payable to them under the provisions of the Agency Agreement, together with (if payable) VAT thereon as provided therein;	0.00	n.a.
(ii) any amounts then due and payable to the Cash Manager and any fees, costs, charges, Liabilities and expenses then due under the provisions of the Cash Management Agreement, together with VAT (if payable) thereon as provided therein;	0.00	n.a.
(iii) any amounts then due and payable to the Servicer and any fees (including the Base Fee), costs, charges, Liabilities and expenses then due under the provisions of the Servicing Agreement, inclusive of VAT (if payable) thereon as provided therein;	0.00	n.a.
(iv) any amounts then due and payable to the Back-Up Servicer Facilitator and any fees, costs, charges, Liabilities and expenses then due under the provisions of the Servicing Agreement, together with (if payable) VAT thereon as provided therein;	0.00	n.a.
(v) any amounts then due and payable to the Corporate Services Provider and any fees, costs, charges, Liabilities and expenses then due and payable to the Corporate Services Provider under the provisions of the Corporate Services Agreement together with (if payable) VAT thereon as provided therein;	0.00	n.a.
(vi) any amounts then due and payable to the Issuer Account Bank and any custodian and any fees, costs, charges, Liabilities and expenses then due and payable to the Issuer Account Bank under the provisions of the Bank Account Agreement and any Custody Agreement, together with (if payable) VAT thereon as provided therein;	0.00	n.a.
(vii) any amounts then due and payable to the Collection Account Bank and any fees, costs, charges, Liabilities and expenses then due under the provisions of the Collection Account Agreement, together with (if applicable) VAT thereon as provided therein; and	0.00	n.a.
(viii) if applicable, the fees, costs, liabilities and expenses of the securitisation repository or any other third party website provider;	0.00	n.a.

CMF 2020-1 PLC

Monthly Investor Report

March 2020

Post-Enforcement Priority of Payments

(c) third, to pay in or towards satisfaction of any amounts due to the Swap Provider in respect of the Swap Agreement (including any termination payment due and payable by the Issuer to the extent it is not satisfied by any payments by the Issuer to the Swap Provider under the Swap Collateral Account Priority of Payments but excluding, if applicable, any related Hedge Subordinated Amounts);	0.00	n.a.
(d) fourth, to pay, pro rata and pari passu, according to the respective outstanding amounts thereof interest and principal due and payable on the Class A Notes until the Principal Amount Outstanding on the Class A Notes has been reduced to zero;		
Class A Interest	0.00	n.a.
Class A Principal	0.00	n.a.
(e) fifth, to pay, pro rata and pari passu, according to the respective outstanding amounts thereof, interest and principal due and payable on the Class B Notes until the Principal Amount Outstanding on the Class B Notes has been reduced to zero;		
Class B Interest	0.00	n.a.
Class B Principal	0.00	n.a.
(f) sixth, to pay, pro rata and pari passu, according to the respective outstanding amounts thereof, interest and principal due and payable on the Class C Notes until the Principal Amount Outstanding on the Class C Notes has been reduced to zero;		
Class C Interest	0.00	n.a.
Class C Principal	0.00	n.a.
(g) seventh, to pay, pro rata and pari passu, according to the respective outstanding amounts thereof, interest and principal due and payable on the Class D Notes until the Principal Amount Outstanding on the Class D Notes has been reduced to zero;		
Class D Interest	0.00	n.a.
Class D Principal	0.00	n.a.
(h) eighth, to pay, pro rata and pari passu, according to the respective outstanding amounts thereof, interest and principal due and payable on the Class E Notes until the Principal Amount Outstanding on the Class E Notes has been reduced to zero;		
Class E Interest	0.00	n.a.
Class E Principal	0.00	n.a.
(i) ninth, to pay in accordance with the terms of the Swap Agreement to the Swap Provider in respect of any Hedge Subordinated Amounts (to the extent not satisfied by payment to the Swap Provider by the Issuer of any applicable amount under the Swap Collateral Account Priority of Payments);	0.00	n.a.
(j) tenth, to pay, pro rata and pari passu, according to the respective outstanding amounts thereof, interest and principal due and payable on the Class X Notes until the Principal Amount Outstanding on the Class X Notes has been reduced to zero;		
Class X Interest	0.00	n.a.
Class X Principal	0.00	n.a.
(k) eleventh, to pay, pro rata and pari passu, amounts due and payable to third parties (if any);	0.00	n.a.

CMF 2020-1 PLC

Monthly Investor Report

March 2020

Post-Enforcement Priority of Payments		
(l) twelfth, to pay the Issuer Profit Amount and any corporation tax of the Issuer not otherwise able to be paid from amounts standing to the credit of the Issuer Profit Ledger; and	0.00	n.a.
(m) thirteenth, on any Interest Payment Date prior to (but excluding) the Optional Redemption Date to pay any excess amounts, pro rata and pari passu as RC1 Payments to the holders of the RC1 Residual Certificates and thereafter to pay any excess amounts, pro rata and pari passu, on such Interest Payment Date, as RC2 Payments to the holders of the RC2 Residual Certificates.		
RC1 Payments	0.00	n.a.
RC2 Payments	0.00	n.a.
Total paid	0.00	n.a.

CMF 2020-1 PLC
Monthly Investor Report

March 2020

Portfolio Analysis

Current Balance	Current Balance	Current Balance (%)	Number of Accounts	Number of Accounts (%)
0 <=x< 75,000	12,092,815.16	3.68%	212	10.81%
75,000 <=x< 100,000	20,255,085.41	6.16%	229	11.68%
100,000 <=x< 125,000	29,418,750.20	8.95%	260	13.26%
125,000 <=x< 150,000	37,491,577.56	11.40%	273	13.92%
150,000 <=x< 175,000	37,052,236.15	11.27%	229	11.68%
175,000 <=x< 200,000	33,346,574.44	10.14%	179	9.13%
200,000 <=x< 225,000	36,145,764.14	10.99%	171	8.72%
225,000 <=x< 250,000	26,849,314.89	8.17%	114	5.81%
250,000 <=x< 275,000	23,838,265.52	7.25%	91	4.64%
275,000 <=x< 300,000	17,399,131.79	5.29%	61	3.11%
300,000 <=x< 325,000	11,263,865.86	3.43%	36	1.84%
325,000 <=x< 350,000	10,084,335.14	3.07%	30	1.53%
350,000 <=x< 375,000	5,835,230.16	1.77%	16	0.82%
375,000 <=x	27,719,877.11	8.43%	60	3.06%
Total	328,792,823.53	100.00%	1,961	100.00%

Original Balance	Current Balance	Current Balance (%)	Number of Accounts	Number of Accounts (%)
0 <=x< 75,000	10,103,074.37	3.07%	183	9.33%
75,000 <=x< 100,000	18,911,589.54	5.75%	222	11.32%
100,000 <=x< 125,000	28,703,730.85	8.73%	262	13.36%
125,000 <=x< 150,000	34,085,771.52	10.37%	256	13.05%
150,000 <=x< 175,000	39,205,665.66	11.92%	249	12.70%
175,000 <=x< 200,000	33,879,228.10	10.30%	185	9.43%
200,000 <=x< 225,000	34,116,242.62	10.38%	165	8.41%
225,000 <=x< 250,000	28,817,742.97	8.76%	125	6.37%
250,000 <=x< 275,000	24,186,638.58	7.36%	94	4.79%
275,000 <=x< 300,000	19,228,059.19	5.85%	69	3.52%
300,000 <=x< 325,000	10,724,973.84	3.26%	35	1.78%
325,000 <=x< 350,000	10,589,660.72	3.22%	32	1.63%
350,000 <=x< 375,000	6,299,438.44	1.92%	18	0.92%
375,000 <=x	29,941,007.13	9.11%	66	3.37%
Total	328,792,823.53	100.00%	1,961	100.00%

CMF 2020-1 PLC
Monthly Investor Report

March 2020

Portfolio Analysis

Original LTV	Current Balance	Current Balance (%)	Number of Accounts	Number of Accounts (%)
0 <=x< 70%	95,489,660.81	29.04%	595	30.34%
70% <=x< 75%	38,746,492.36	11.78%	207	10.56%
75% <=x< 80%	98,561,847.93	29.98%	548	27.94%
80% <=x< 85%	36,793,096.47	11.19%	202	10.30%
85% <=x< 90%	59,201,725.96	18.01%	409	20.86%
90% <=x< 95%	0.00	0.00%	0	0.00%
95% <=x< 105%	0.00	0.00%	0	0.00%
Total	328,792,823.53	100.00%	1,961	100.00%

Current LTV	Current Balance	Current Balance (%)	Number of Accounts	Number of Accounts (%)
0 <=x< 70%	112,869,455.04	34.33%	701	35.75%
70% <=x< 75%	100,403,270.38	30.54%	536	27.33%
75% <=x< 80%	43,358,311.13	13.19%	248	12.65%
80% <=x< 85%	66,373,295.63	20.19%	431	21.98%
85% <=x< 90%	5,788,491.35	1.76%	45	2.29%
90% <=x< 95%	0.00	0.00%	0	0.00%
95% <=x< 100%	0.00	0.00%	0	0.00%
100% <=x< 105%	0.00	0.00%	0	0.00%
105% <=x	0.00	0.00%	0	0.00%
Total	328,792,823.53	100.00%	1,961	100.00%

Origination Year	Current Balance	Current Balance (%)	Number of Accounts	Number of Accounts (%)
<=2013	1,738,293.91	0.53%	16	0.82%
2014	2,603,504.56	0.79%	25	1.27%
2015	0.00	0.00%	0	0.00%
2016	37,224.65	0.01%	1	0.05%
2017	95,631.15	0.03%	1	0.05%
2018	137,157,694.99	41.72%	843	42.99%
2019	187,160,474.27	56.92%	1,075	54.82%
Total	328,792,823.53	100.00%	1,961	100.00%

CMF 2020-1 PLC
Monthly Investor Report

March 2020

Portfolio Analysis

Original Term (years)	Current Balance	Current Balance (%)	Number of Accounts	Number of Accounts (%)
0 <=x< 15	23,400,859.45	7.12%	171	8.72%
15 <=x< 17	16,231,670.01	4.94%	107	5.46%
17 <=x< 19	16,363,046.71	4.98%	105	5.35%
19 <=x< 21	23,138,494.00	7.04%	136	6.94%
21 <=x< 23	20,783,772.51	6.32%	109	5.56%
23 <=x< 25	18,019,649.39	5.48%	96	4.90%
25 <=x< 27	36,539,089.92	11.11%	236	12.03%
27 <=x< 29	16,255,899.65	4.94%	91	4.64%
29 <=x	158,060,341.89	48.07%	910	46.40%
Total	328,792,823.53	100.00%	1,961	100.00%

Remaining Term (years)	Current Balance	Current Balance (%)	Number of Accounts	Number of Accounts (%)
0 <=x< 5	553,177.22	0.17%	6	0.31%
5 <=x< 8	2,494,537.52	0.76%	23	1.17%
8 <=x< 11	10,694,527.93	3.25%	81	4.13%
11 <=x< 14	15,822,060.78	4.81%	109	5.56%
14 <=x< 17	22,993,606.35	6.99%	149	7.60%
17 <=x< 20	32,087,633.59	9.76%	184	9.38%
20 <=x< 23	29,621,600.43	9.01%	154	7.85%
23 <=x< 26	44,795,673.29	13.62%	284	14.48%
26 <=x	169,730,006.42	51.62%	971	49.52%
Total	328,792,823.53	100.00%	1,961	100.00%

Repayment Type	Current Balance	Current Balance (%)	Number of Accounts	Number of Accounts (%)
Repayment	306,167,968.75	93.12%	1,870	95.36%
Interest Only	16,266,857.17	4.95%	71	3.62%
Part & Part	6,357,997.61	1.93%	20	1.02%
Total	328,792,823.53	100.00%	1,961	100.00%

CMF 2020-1 PLC
Monthly Investor Report

March 2020

Portfolio Analysis

Current Interest	Current Balance	Current Balance (%)	Number of Accounts	Number of Accounts (%)
0.00% <=x< 2.50%	0.00	0.00%	0	0.00%
2.50% <=x< 3.00%	2,537,481.61	0.77%	17	0.87%
3.00% <=x< 3.25%	16,183,072.39	4.92%	83	4.23%
3.25% <=x< 3.50%	6,301,308.97	1.92%	36	1.84%
3.50% <=x< 3.75%	69,614,911.20	21.17%	362	18.46%
3.75% <=x< 4.00%	99,556,751.47	30.28%	548	27.94%
4.00% <=x< 4.25%	46,665,879.69	14.19%	282	14.38%
4.25% <=x< 4.50%	52,135,248.83	15.86%	351	17.90%
4.50% <=x< 4.75%	17,864,826.84	5.43%	115	5.86%
4.75% <=x< 5.00%	10,536,282.77	3.20%	87	4.44%
5.00% <=x	7,397,059.76	2.25%	80	4.08%
Total	328,792,823.53	100.00%	1,961	100.00%

Current Margin Over Rel	Current Balance	Current Balance (%)	Number of Accounts	Number of Accounts (%)
0.00% <=x< 2.50%	0.00	0.00%	0	0.00%
2.50% <=x< 3.00%	3,426,708.95	1.04%	21	1.07%
3.00% <=x< 3.25%	17,179,964.61	5.23%	88	4.49%
3.25% <=x< 3.50%	6,471,405.46	1.97%	36	1.84%
3.50% <=x< 3.75%	69,675,856.59	21.19%	366	18.66%
3.75% <=x< 4.00%	98,643,486.80	30.00%	544	27.74%
4.00% <=x< 4.25%	46,474,504.27	14.13%	281	14.33%
4.25% <=x< 4.50%	51,206,355.03	15.57%	344	17.54%
4.50% <=x< 4.75%	17,781,199.29	5.41%	114	5.81%
4.75% <=x< 5.00%	14,064,783.01	4.28%	123	6.27%
5.00% <=x	3,868,559.52	1.18%	44	2.24%
Total	328,792,823.53	100.00%	1,961	100.00%

Interest Rate Index	Current Balance	Current Balance (%)	Number of Accounts	Number of Accounts (%)
BBR	40,217,153.44	12.23%	225	11.47%
3 Month Libor	288,575,670.09	87.77%	1,736	88.53%
Total	328,792,823.53	100.00%	1,961	100.00%

CMF 2020-1 PLC
Monthly Investor Report

March 2020

Portfolio Analysis

Loan Purpose	Current Balance	Current Balance (%)	Number of Accounts	Number of Accounts (%)
Purchase	239,280,155.11	72.78%	1,406	71.70%
Re-Mortgage	89,512,668.42	27.22%	555	28.30%
Total	328,792,823.53	100.00%	1,961	100.00%

Buy-To-Let	Current Balance	Current Balance (%)	Number of Accounts	Number of Accounts (%)
Yes	0.00	0.00%	0	0.00%
No	328,792,823.53	100.00%	1,961	100.00%
Total	328,792,823.53	100.00%	1,961	100.00%

Arrears Multiple	Current Balance	Current Balance (%)	Number of Accounts	Number of Accounts (%)
x <=0	328,179,624.61	99.81%	1,957	99.80%
0 <x< 1	435,597.92	0.13%	3	0.15%
1 <=x< 2	177,601.00	0.05%	1	0.05%
2 <=x<3	0.00	0.00%	0	0.00%
3 <=x	0.00	0.00%	0	0.00%
Total	328,792,823.53	100.00%	1,961	100.00%

Self-Certified Product	Current Balance	Current Balance (%)	Number of Accounts	Number of Accounts (%)
Yes	0.00	0.00%	0	0.00%
No	328,792,823.53	100.00%	1,961	100.00%
No Data	0.00	0.00%	0	0.00%
Total	328,792,823.53	100.00%	1,961	100.00%

Valuation Type	Current Balance	Current Balance (%)	Number of Accounts	Number of Accounts (%)
Full, Internal and External	328,792,823.53	100.00%	1,961	100.00%
Other	0.00	0.00%	0	0.00%
Total	328,792,823.53	100.00%	1,961	100.00%

CMF 2020-1 PLC
Monthly Investor Report

March 2020

Portfolio Analysis

Region	Current Balance	Current Balance (%)	Number of Accounts	Number of Accounts (%)
East	42,413,908.98	12.90%	205	10.45%
East Midlands	29,455,238.59	8.96%	188	9.59%
London	30,593,651.30	9.30%	114	5.81%
North East	10,796,549.51	3.28%	94	4.79%
North West	36,611,197.63	11.14%	276	14.07%
Scotland	10,070,988.69	3.06%	75	3.82%
South East	72,783,431.78	22.14%	338	17.24%
South West	29,470,844.85	8.96%	168	8.57%
Wales	16,212,089.84	4.93%	127	6.48%
West Midlands	27,122,783.93	8.25%	189	9.64%
Yorkshire and the Humber	23,262,138.43	7.08%	187	9.54%
Total	328,792,823.53	100.00%	1,961	100.00%

Year Built	Current Balance	Current Balance (%)	Number of Accounts	Number of Accounts (%)
x< 1900	16,558,644.55	5.04%	98	5.00%
1900 <=x< 1920	25,584,755.97	7.78%	188	9.59%
1920 <=x< 1940	43,598,592.94	13.26%	252	12.85%
1940 <=x< 1960	32,939,403.96	10.02%	216	11.01%
1960 <=x< 1980	44,306,428.15	13.48%	280	14.28%
1980 <=x< 2000	30,267,801.43	9.21%	190	9.69%
2000 <=x< 2002	5,604,439.29	1.70%	31	1.58%
2002 <=x< 2004	3,152,293.36	0.96%	16	0.82%
2004 <=x< 2006	4,927,108.69	1.50%	33	1.68%
2006 <=x<=2013	121,853,355.19	37.06%	657	33.50%
Total	328,792,823.53	100.00%	1,961	100.00%

Seasoning (years)	Current Balance	Current Balance (%)	Number of Accounts	Number of Accounts (%)
0 <=x< 5	324,451,025.06	98.68%	1,920	97.91%
5 <=x< 6	2,221,927.02	0.68%	20	1.02%
6 <=x< 7	2,119,871.45	0.64%	21	1.07%
7 <=x	0.00	0.00%	0	0.00%
Total	328,792,823.53	100.00%	1,961	100.00%

CMF 2020-1 PLC

Monthly Investor Report

March 2020

Portfolio Analysis

Employment Type	Current Balance	Current Balance (%)	Number of Accounts	Number of Accounts (%)
Self Employed	112,427,998.91	34.19%	580	29.58%
Employed	216,364,824.62	65.81%	1,381	70.42%
Other	0.00	0.00%	0	0.00%
Total	328,792,823.53	100.00%	1,961	100.00%

Property Type	Current Balance	Current Balance (%)	Number of Accounts	Number of Accounts (%)
House, Detached, Semi-d	211,086,902.06	64.20%	1,166	59.46%
Flat, Apartment	20,644,155.65	6.28%	134	6.83%
Bungalow	13,953,329.08	4.24%	84	4.28%
Terraced House	83,108,436.74	25.28%	577	29.42%
Other	0.00	0.00%	0	0.00%
Total	328,792,823.53	100.00%	1,961	100.00%

First-time Buyer	Current Balance	Current Balance (%)	Number of Accounts	Number of Accounts (%)
Yes	127,624,219.79	38.82%	805	41.05%
No	201,168,603.74	61.18%	1,156	58.95%
Total	328,792,823.53	100.00%	1,961	100.00%

Date	29/02/2020
Current Balance	328,792,823.53
Number of Accounts	1,961
Average Loan Balance	167,665.90
Maximum Loan Balance	829,844.75
Weighted Average Interest Rate	4.01%
Weighted Average Mortgage Margin	3.99%
Weighted Average Seasoning (yrs)	1.07
Weighted Average Remaining Maturity (yrs)	25.40
Buy To Let	0.00
Interest Only	16,266,857.17
Weighted Average Original LTV	71.15%
Weighted Average Current LTV	69.64%

DISCLAIMER

U.S. Bank Global Corporate Trust is a trading name of U.S. Bank Global Corporate Trust Limited, U.S. Bank Trustees Limited and Elavon Financial Services DAC (each a U.S. Bancorp group company). U.S. Bank Global Corporate Trust Limited is a limited company registered in England and Wales having the registration number 05521133 and a registered address of 125 Old Broad Street, Fifth Floor, London, EC2N 1AR. U.S. Bank Trustees Limited is a limited company registered in England and Wales having the registration number 02379632 and a registered address of 125 Old Broad Street, Fifth Floor, London, EC2N 1AR. Elavon Financial Services DAC is registered in Ireland with the Companies Registration Office, Reg. No. 418442. The liability of the member is limited. Registered Office: Building 8, Cherrywood Business Park, Loughlinstown, Dublin 18, Ireland D18 W319. Directors: A list of names and personal details of every director of the company is available for inspection to the public at the company's registered office for a nominal fee. Regulated by the Central Bank of Ireland. In the UK, Elavon Financial Services DAC trades as U.S. Bank Global Corporate Trust through its UK Branch from its establishment at 125 Old Broad Street, Fifth Floor, London, EC2N 1AR (registered with the Registrar of Companies for England and Wales under Registration No. BR020005) and is authorised by the Central Bank of Ireland and the Prudential Regulation Authority and subject to limited regulation by the Financial Conduct Authority and Prudential Regulation Authority. Details about the extent of our authorisation and regulation by the Prudential Regulation Authority, and regulation by the Financial Conduct Authority, are available from us on request.